

PERMANENT TEST STATIONS

Accessories

Document No.: 06-800-R1

Sheet: 1 of 1

German Cathodic Protection



Aerial Line Markers

Aerial line markers are available in a wide range of shapes, sizes and colours. Reflective film can be applied to the entire surface or as cutout segments.

Materials

Plastics made of PMMA- ASA - and glassfibre reinforced polyester, for UV resistance and excellent reflective properties.

Other materials, special dimensions and other colours, not shown here are available on request.

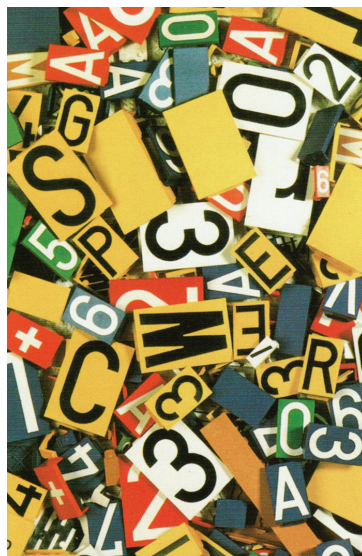
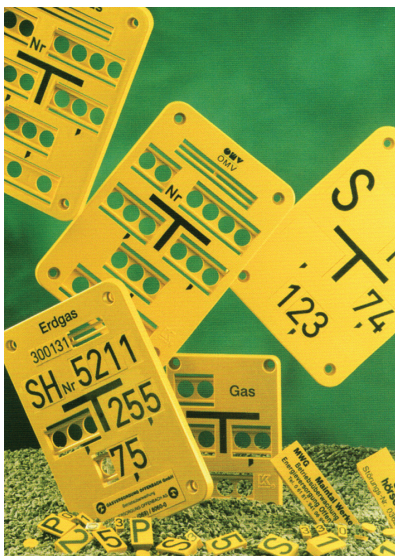
Accessories

Fasteners or brackets and all required screws, nuts and washers are included, letters and figures made of black, weatherproof plastic are available from A-Z and 0-9.

Dimensions



Type	50	51	60	70	90	100	110
Roof area	335 x 230 mm	350 x 230 mm	500 x 330 mm	400 x 300 mm	440 mm Ø	500 mm Ø	600 mm Ø
Roof pitch	45°	45°	60°	45°	--	--	--
Roof position	90° rotatable	90° rotatable	15° rotatable	90° rotatable	--	--	--
Material thickness	5 mm	5 mm	5 mm	5 mm	5 mm	5 mm	5 mm
Material colour	e.g. yellow, red	e.g. yellow, red	e.g. yellow, red	e.g. yellow, red	e.g. yellow, red	e.g. yellow, red	e.g. yellow, red



Identification Plates

Identification plates according to DIN-standard made of a two colour injection-moulded plate in ASA Thermoplast (Luran S), which resists extreme weather, temperatures and shocks.

Non-reflective matt surfaces guarantee excellent readability even at long distances.

Plate are securely fastened by 4 countersunk stainless steel (V2a) screws in flush mounts.

They can be fitted with either SGM inserts or any other inserts currently being produced by any manufacturer.

Identification plates to other international standards as well as the corresponding accessories in various sizes, colours, materials and inscriptions available upon request.